

POWER MIG[®] 180 Dual

Processes

MIG, Flux-Cored

Product Number

K3018-2

See back for complete specs

Input Power

120/1/60 or 208/230/1/60

Input Current at Rated Output

20A

Rated Output Current/Voltage/Duty Cycle

120V: 90A/19.5V/20%

208V: 130A/17.6V/30%

230V: 130A/20V/30%

Output Range

120V: 30-140 Amps DC, Max. OCV: 33

208V/230V: 30-180 Amps DC, Max. OCV: 34

Wire Feed Speed Range

50-500 ipm (1.3-12.7 m/min)

Weight/Dimensions (H x W x D)

68 lbs. (31 kg)

14 x 10.15 x 18.16 in.

(357 x 258 x 472 mm)

POWER MIG[®]

The Professional's ChoiceSM

Have it both ways with the POWER MIG[®] 180 Dual wire welder. With dual 120 or 208/230 volt input power capability, you can use the same machine to weld at home, in the shop or out on the job site. It's a great choice for sheet metal and light frame autobody work, farm or small shop applications.

FEATURES

- ▶ **Dual Input Power Capability** – Select 120 volt input power for home and generator-driven environments or choose 208/230 volt input power for shop applications on thicker materials.
- ▶ **Industrial Cast Aluminum Drive** – Dual gear-driven drive rolls deliver positive traction. Patented split wire guides ensure optimal wire alignment and a brass-to-brass gun connection aids critical conductivity. A large industrial closed-design drive motor improves torque and enhances trouble-free performance.
- ▶ **Diamond Core Technology[™]** – Delivers a forgiving arc, excellent out-of-position arc action, low spatter and a wide voltage sweet spot at a given wire feed speed for steel, stainless steel and aluminum.
- ▶ **Spool Gun Ready** – Just remove the standard MIG gun and plug in the economical Magnum[®] 100SG spool gun (optional) for enhanced aluminum wire feeding performance.
- ▶ **No Hassle Tool-less Design** – For input power changes, wire spool mounting, wire drive service and polarity changes.

APPLICATIONS

- ▶ **Metal Fabrication**
- ▶ **Maintenance and Repair**
- ▶ **Autobody/Farm**
- ▶ **Light Industrial**



Shown K3018-2



120 V
INPUT



230 V
INPUT

WHAT'S INCLUDED

K3018-2 Includes:

- ▶ Magnum[®] PRO 100L Gun, 10 ft. (3.0 m)
- ▶ 120V and 230V Input Cables
- ▶ Input Cable Bag
- ▶ Gas and Gasless Nozzles
- ▶ Gun Cable Liner (pre-installed in gun)
- ▶ Learn-To-Use DVD
- ▶ Work Cable and Clamp
- ▶ Adjustable Gas Regulator and Hose
- ▶ Spindle Adapter
- ▶ Sample (0.90 kg) Spool of SuperArc[®] L-56[®] Mild Steel MIG Wire
- ▶ Sample (0.45 kg) Spool NR[®]-211-MP Flux-Cored Wire
- ▶ .025 in. (0.6 mm) and .035 in. (0.9 mm) Contact Tips
- ▶ .025 - .030 in. (0.6 - 0.8 mm) and .035 in. (0.9 mm) Drive Rolls
- ▶ .030 - .045 in. (0.8 - 1.1 mm) Knurled Drive Rolls
- ▶ .025 - .035 in. (0.6 - 0.9 mm) and .045 (1.1 mm) Wire Guides

INPUT



OUTPUT



DIAMOND CORE
TECHNOLOGY



Two Year Extended
Warranty Available in
the U.S.A. and Canada



THE LINCOLN ELECTRIC COMPANY

DUAL INPUT POWER CAPABILITY

- Choose common 120 volt or industrial 230 volt input power.
- No tools required – Just attach the correct input power cord and twist the locking nut.
- Extend your welding power – Weld up to ½ inch steel with self-shielded flux-cored wire.
- Input cable bag included – When not in use, stow your input power cables and other accessories in the standard, detachable canvas bag.



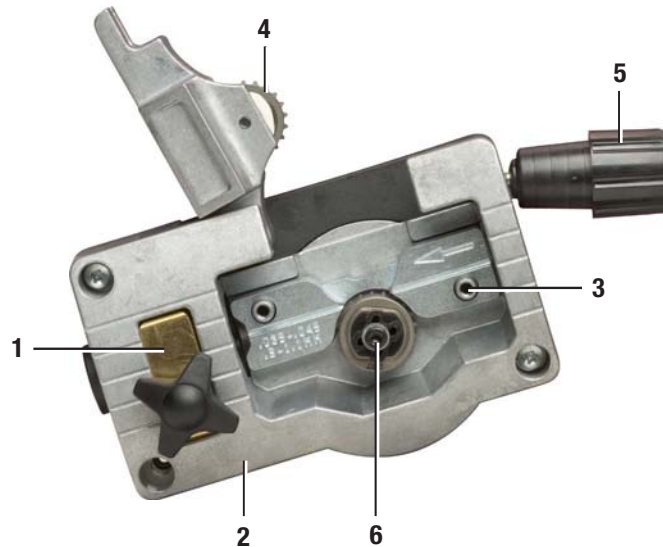
PROFESSIONAL WIRE DRIVE

Enhanced Quality

1. Brass Gun Connection Enhances Conductivity
2. Rigid Cast Aluminum Drive Aids Wire Alignment
3. Patented Split Wire Guide Reduces Tangles
4. Dual Gear-Driven Drive Rolls Deliver Positive Traction

Easy to Use

5. Easy Turn Tension Adjustment
6. Tool-less Quick Lock Drive Roll Changeovers



PRECISION ALUMINUM WELDING

Magnum® 100SG Spool Gun

Our low-priced spool gun is your most reliable aluminum feeding solution.



Great For Projects or Repair

Just add 100% Argon shielding gas, replace the standard MIG gun with the Magnum® 100SG Spool Gun and flip the gun selector switch for spool gun operation.



FREE
WIRE INCLUDED



Complete Kit. No bulky module required.
Order K2532-1

PRODUCT SPECIFICATIONS

Product Name	Product Number	Input Power	Rated Output Current/Voltage/Duty Cycle	Input Current @ Rated Output	Output Range	Wire Feed Speed Range	H x W x D inches (mm)	Net Weight lbs. (kg)
POWER MIG® 180 Dual	K3018-2	120/1/60	120V: 90A/19.5V/20%	20A	120V: 30-140 Amps DC, Max. OCV : 33	50-500 ipm (1.3-12.7 m/min)	14 x 10.15 x 18.16 (357 x 258 x 472)	68 (31)
		208/230/1/60	208V: 130A/17.6V/30% 230V: 130A/20V/30%		230V: 30-180 Amps DC, Max. OCV : 34			

RECOMMENDED ACCESSORIES

GENERAL OPTIONS

Welding Cart

Full-featured cart is designed to store and transport a welder, 80 cubic foot gas cylinder, welding cables and accessories. Includes an angled top shelf for easy access to welder controls, a lower tray for added storage space, a sturdy handle and a convenient cable wrap hanger.

Order K2275-1



Utility Cart

Heavy duty cart stores and transports welder, 150 cubic foot shielding gas cylinder, welding cables and accessories. Includes stable platforms for welder and gas bottle platform, lower tray for added storage capacity and adjustable height handle.

Order K520



Small Canvas Cover

Protect your welder when not in use. Made from attractive red canvas that is flame retardant, mildew resistant and water repellent. Includes a convenient side pocket to hold your welding torch or gun.

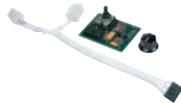
Order K2377-1



Spot Timer Kit

This timer allows you to set a fixed weld time of up to 10 seconds that is initiated when you pull the gun trigger. Ideal for making consistent spot welds on thin sheet metal.

Order K2525-1



Accessory Bag

Canvas bag can be used to store your welding accessories and tools.

Order K3071-1



WIRE FEEDER OPTIONS

Magnum® 100SG Spool Gun

Designed to easily feed 4 in. (102 mm) diameter 1 lb. (0.45 kg) spools of .030 in. (0.8 mm) or .035 in. (0.9 mm) diameter SuperGlaze® aluminum MIG wire. Includes gun, adapter kit, .035 in. (0.9 mm) contact tips (qty. 3), gas nozzle, and a 1 lb. (0.45 kg) spool of SuperGlaze® 4043 .035 in. (0.9 mm) MIG wire. Packaged in a convenient carrying case.

Order K2532-1



.045 in. (1.1 mm) Innershield® Kit

Includes everything required to weld with .045 in. (1.1 mm) Innershield® self-shielded flux-cored wire. Includes an .035-.045 in. (0.9-1.1 mm) Magnum® 100L gun liner, a .045 in. (1.1 mm) contact tip, a gasless nozzle, knurled drive roll, .045 in. (1.1 mm) inner wire guide and a 10 lb. (4.5 kg) spool of .045 in. (1.1 mm) Innershield® NR®-212 wire.

Order K2528-1



Welding Fume Extractors

Lincoln offers a wide variety of welding fume extraction environmental system solutions, ranging from portable systems easily wheeled around the shop to shop-wide central systems servicing many dedicated welding stations.

Request Publication E13.40



For best welding results with Lincoln Electric equipment, always use Lincoln Electric consumables. Visit www.lincolnelectric.com for more details.

CUSTOMER ASSISTANCE POLICY

The business of The Lincoln Electric Company is manufacturing and selling high quality welding equipment, consumables, and cutting equipment. Our challenge is to meet the needs of our customers and to exceed their expectations. On occasion, purchasers may ask Lincoln Electric for information or advice about their use of our products. Our employees respond to inquiries to the best of their ability based on information provided to them by the customers and the knowledge they may have concerning the application. Our employees, however, are not in a position to verify the information provided or to evaluate the engineering requirements for the particular weldment. Accordingly, Lincoln Electric does not warrant or guarantee or assume any liability with respect to such information or advice. Moreover, the provision of such information or advice does not create, expand, or alter any warranty on our products. Any express or implied warranty that might arise from the information or advice, including any implied warranty of merchantability or any warranty of fitness for any customers' particular purpose is specifically disclaimed.

Lincoln Electric is a responsive manufacturer, but the selection and use of specific products sold by Lincoln Electric is solely within the control of, and remains the sole responsibility of the customer. Many variables beyond the control of Lincoln Electric affect the results obtained in applying these types of fabrication methods and service requirements.

Subject to Change – This information is accurate to the best of our knowledge at the time of printing. Please refer to www.lincolnelectric.com for any updated information.